

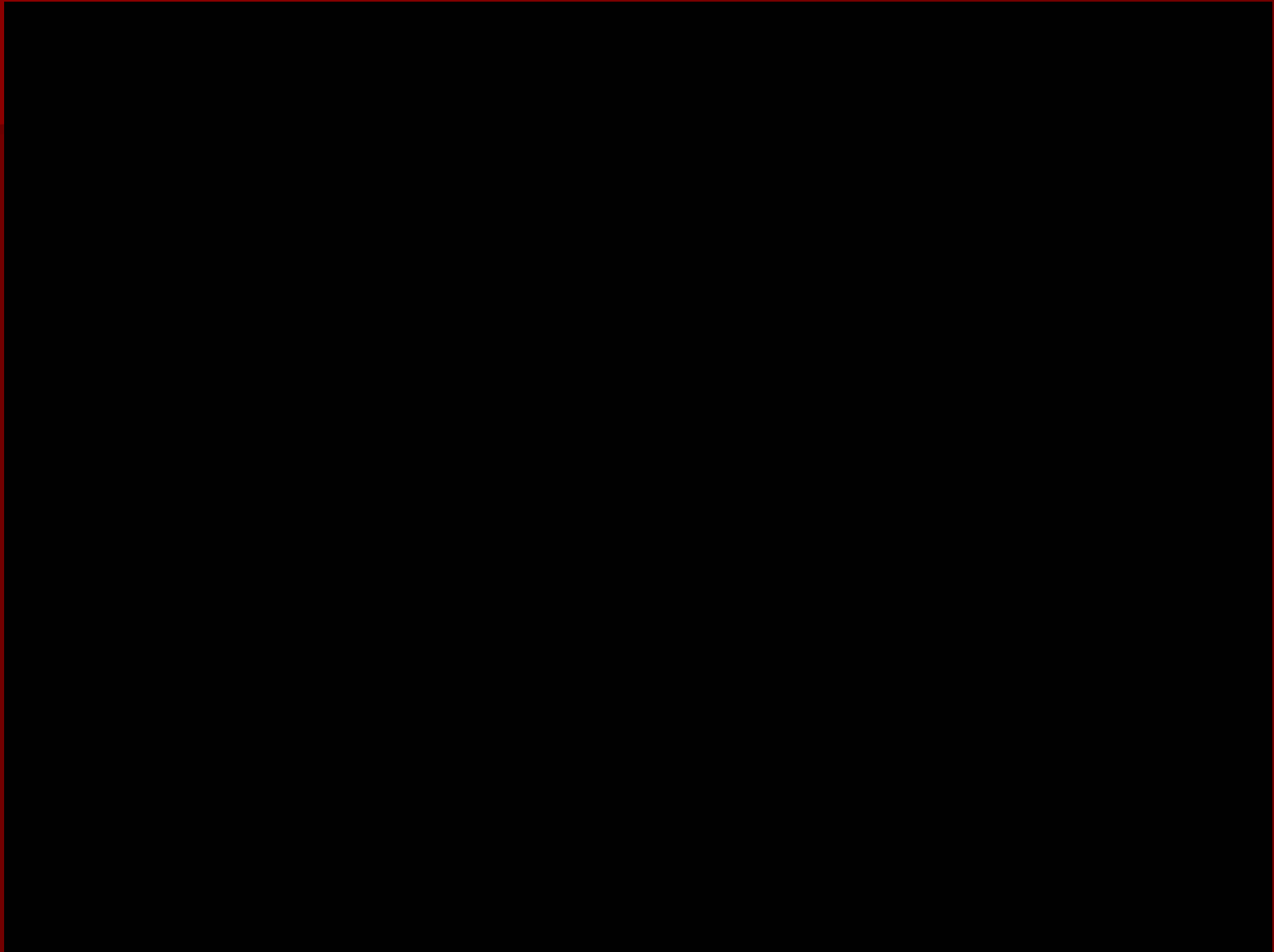


# DEDICATION

*“If you really want to achieve something you will find a way”*

**Neal Parker**

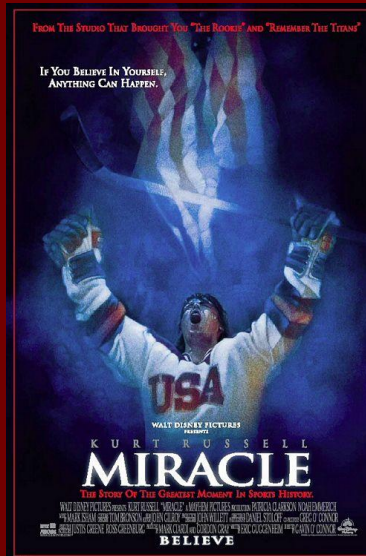
# Dedication



# Dedication

## ■ Miracle

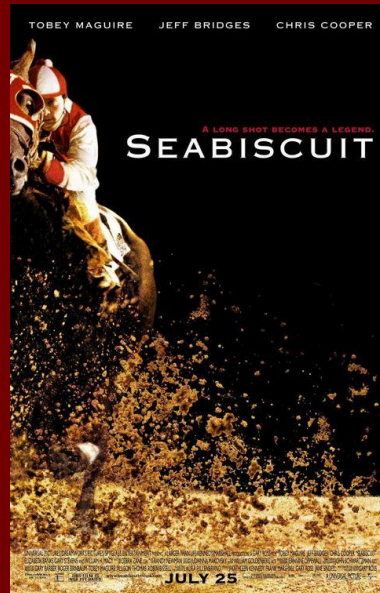
- “Legs Feed The Wolf!”
- “Grow Through Pain!”
- “Challenge, Challenge, Challenge!”



# Dedication

## ■ Seabiscuit

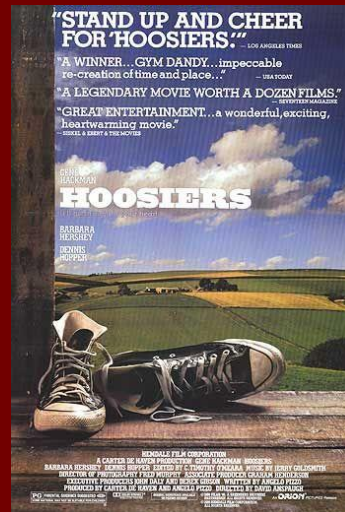
- Re-training To Do Things We Don't Normally Do.
- Train To React In The Right Ways.



# Dedication

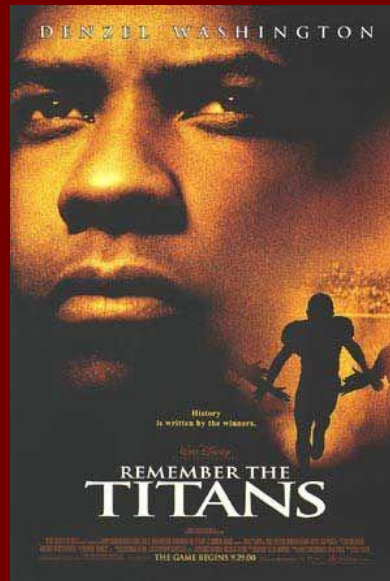
## ■ Hoosiers

- Focus on the fundamentals.
- Don't run out of steam before your opponent.



# Dedication

- Remembering The Titans
  - “Perfection!”
  - “Change!”



# Dedication to Sincerity and Truth

- **Why is it so important that we eat unleavened bread?**
- **Would Jesus Christ death alone make eternal life possible?**
- **Is there a difference between our being devoted and dedicated?**
  - **Devotion – Presents a strong feeling of love**
  - **Dedication – Refers to a person's attitude and commitment towards upholding a principle in love.**

# Dedication to Sincerity and Truth

**Accepting Jesus Christ's sacrifice is only the first step in God's plan for bring all humans into the God divine Family.**

## ■ **Exodus 12:34, 39**

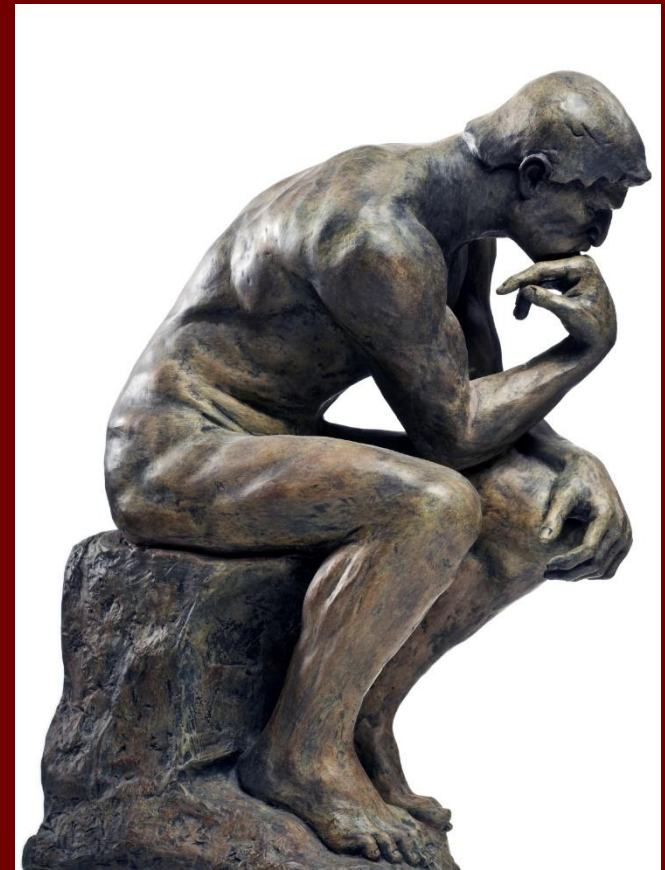
**Many assume that from Exodus 12, it was merely a time management issue regarding the use of unleavened bread. There appears to be more to it.**

# Dedication to Sincerity and Truth

- **Exodus 12:15-20**

- **Leviticus 23:6-8**

**More Than Meets The Eye /  
More Than The Physical  
Actions!**



# Dedication to Sincerity and Truth

- **Natural Phenomenon or Divine Provision?**
  - Numbers 11:6-10
- **What was the purpose of the Manna?**
  - Deuteronomy 8:3, 16
- **Manna Ceases Jesus Christ Appears**
  - Joshua 5:10-15



# Dedication to Sincerity and Truth

## ■ John 6:26-40

❖ Believe (v 29) in Him whom He has sent

- Commit unto
- Commit to trust
- Be Committed to

■ I am the bread of life / “the bread that gives life”.

# Dedication to Sincerity and Truth

## ■ John 6:44-58, 60-65

### ❖ Abide / Dwell (v 56) in Me and I in him

- To remain / to sojourn, to continue to be present
- To continue to be, to last, endure
- To remain as one, not to become another or different
- To wait for ; await one

# Dedication to Sincerity and Truth

## ■ I Corinthians 5:6-8

- More than 20 years after the death and resurrection of Jesus Christ, the apostle Paul, tells a gentile church to keep the Feast of Unleavened Bread.

**More Than Meets The Eye /  
More Than The Physical Actions!**

# Dedication to Sincerity and Truth

## ■ What is Leaven?

- An agent, such as yeast, that causes batter or dough to rise, especially by fermentation.
- An element, influence, or agent that works subtly to lighten, enliven or modify a whole.

**More Than Meets The Eye /  
More Than The Physical Actions!**



# Dedication to Sincerity and Truth

## ■ Purge Out / Clean Out

–ekkathairo

“...to cleanse out, clean thoroughly, to cleanse.”

## ■ Leaven

–Zyme

–“...metaphor of inveterate mental and moral corruption, viewed in its tendency to infect others.”

# Dedication to Sincerity and Truth

## ■ Unleavened

–azymos

“...unfermented, free from leaven or yeast.”

Metaphor – free from faults



# Dedication to Sincerity and Truth

## ■ ... Leaven of Malice

–kakia

“...malignity, malice, ill-will, desire to injure, wickedness that is not ashamed to break laws...”

## ■ ... Leaven of Wickedness

–poneria

–“...depravity, iniquity, evil purposes and desires.”

# Dedication to Sincerity and Truth

## ■ ... Unleavened Bread of Sincerity

–eilikrineia

“...purity, sincerity, ingenuousness...”

Metaphor is clearness, purity, sincere

## ■ ... Unleavened Bread of Truth

–aletheia

–“...true, truly, truth, verity.”

# Dedication to Sincerity and Truth

## ■ ... Unleavened Bread of Truth

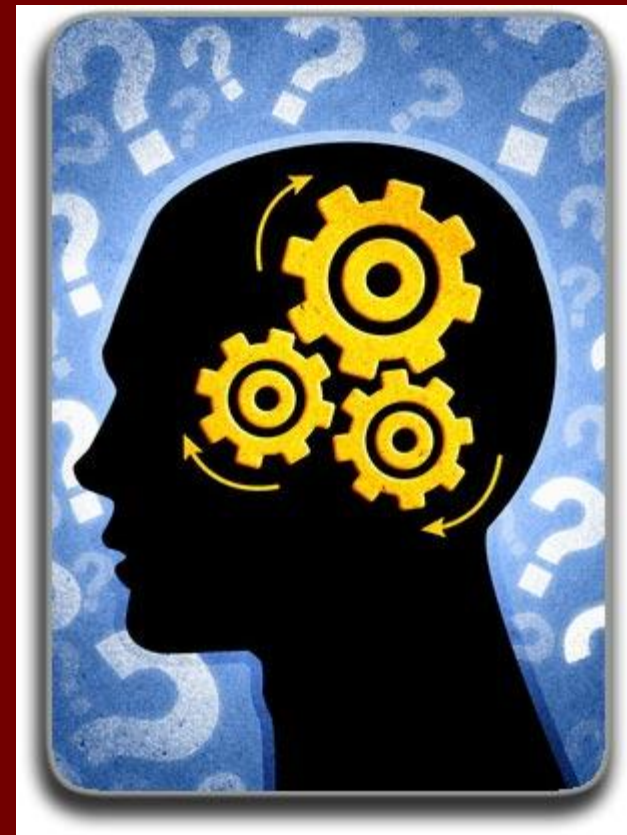
–aletheia

**Metaphor**

- ✓ **What is true in any matter under consideration**
- ✓ **What is true in things appertaining to God and the duties of man, moral and religious truth**
- ✓ **What is true in personal excellence**

# Dedication to Sincerity and Truth

- **What spiritual lesson can we take away?**
  - **The Days of Unleavened Bread concentrates on the required action to keep the relationship going and growing.**
  - We must leave leaven / sin. (Romans 6:1-5)**

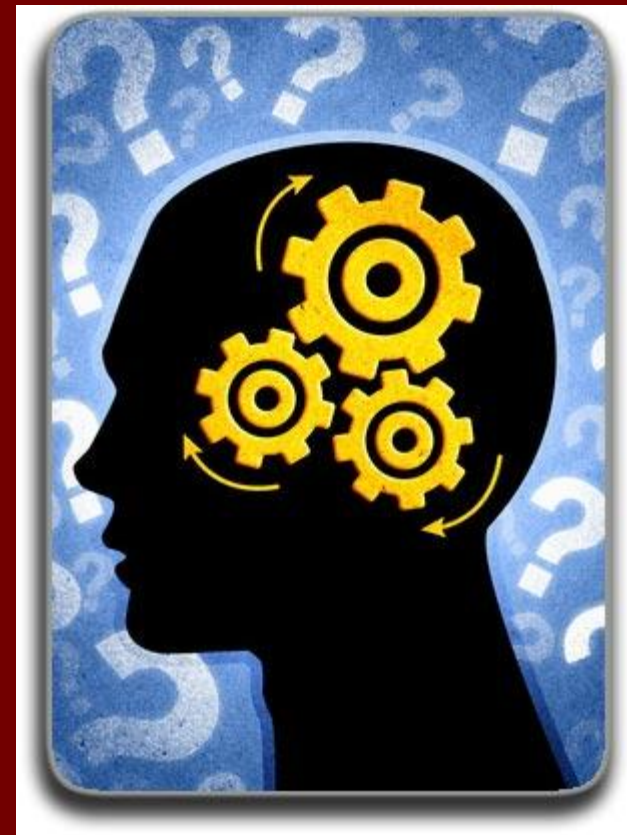


# Dedication to Sincerity and Truth

## ■ What spiritual lesson can we take away?

– Isaiah 56:1-7

- Revelation 2:17 "...I will give him some of the hidden manna...and a new name written...which no one knows, but he who received it."



# **Dedication to Sincerity and Truth**

## **■ Application To Life:**

**The Days of Unleavened Bread concentrates on the required action to keep our Spiritual Relationship with God, through Jesus Christ's sacrifice going and growing.**

**We must be dedicated to the Unleavened Bread of Sincerity and Truth, abide in Jesus Christ's words and live without malice and wickedness.**