

# Message

## Conditions for Discipleship



*Neal Parker*

# Indispensable Conditions For Disciples of Jesus Christ

## ■ Requirements for accurately counting the true cost of allegiance to Christ.

- ❖ Submission
- ❖ Self-Sacrifice
- ❖ Self-Discipline
- ❖ Self-Control
- ❖ Self-Denial



# Essence of Discipleship

- **Submission is a Christian virtue that should characterize the relationship of the believer to God and His will.**

- ❖ **Matthew 3:13-17**

- **Why did Jesus need to be baptized by John?**
- **Why did Jesus submit Himself to John's baptism? (Luke 3:3)**



# Essence of Discipleship

- **Submission is a Christian virtue that should characterize the relationship of the believer to God and His will.**

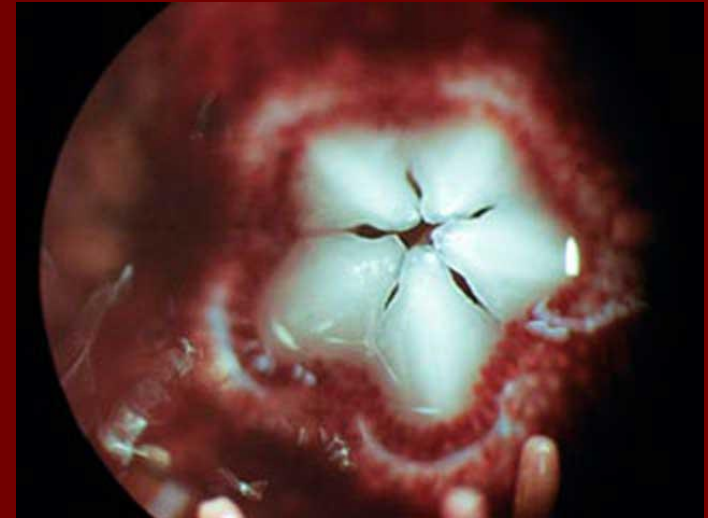
## ❖ **Philippians 2:5-11**

- **Why did Jesus receive the name above every name?**
- **When Jesus called people to repentance, He had submitted Himself to a baptism of repentance.**



# Sea Urchin's Self-Sharpening Teeth

- **Using its five teeth, the sea urchin bores through rock to carve out a niche in which to hide. Despite the grinding and scraping, the urchin's teeth stay sharp.**
  - ❖ **Sea Urchin's tooth is composed of crystals**
  - ❖ **Weaker organic material form perforations**
  - ❖ **Tooth's worn layers shear off**
  - ❖ **Expose a new sharp edge**
  - ❖ **Continual growth at one end/  
Self-Sharpening at the other end**



# Sea Urchin Spiritual Parallel

## ■ **II Corinthians 4:16-18**

- ❖ **Therefore we do not lose heart, but though our outer man is decaying, yet our inner man is being renewed day by day.**

## ■ **I Samuel 16:7**

- ❖ **But the LORD said to Samuel, "Do not look at his appearance or at the height of his stature, because I have rejected him; for God sees not as man sees, for man looks at the outward appearance, but the LORD looks at the heart."**

# Sea Urchin Spiritual Parallel

## ■ Ephesians 3:16-19

- ❖ that He would grant you, according to the riches of His glory, to be strengthened with power through His Spirit in the inner man.

## ■ Proverbs 23:7

- ❖ For as he thinks within himself, so he is. He says to you, "Eat and drink!" But his heart is not with you.

# Sea Urchin Spiritual Parallel

## ■ Colossians 3:10

- ❖ ... and have put on the new self who is being renewed to a true knowledge according to the image of the One who created him

## ■ II Corinthians 3:18

- ❖ But we all, with unveiled face, beholding as in a mirror the glory of the Lord, are being transformed into the same image from glory to glory, just as from the Lord, the Spirit.



# Sea Urchin Spiritual Parallel

## ■ Psalm 51:6

- ❖ Behold, You desire truth in the innermost being,  
And in the hidden part You will make me know  
wisdom.



# Be a Living Sacrifice

## ■ Romans 12:1-2

- ❖ **Implication is that, if we are conformed to the world and not renewed in mind, we cannot...**
  - ✓ **Know the Will of God**
  - ✓ **Know that which is good, acceptable and perfect**
- ❖ **Explicitly stating..**
  - ❖ **Be a living**
  - ❖ **Holy (God's definition of Holy)**
  - ❖ **Acceptable sacrifice for God**

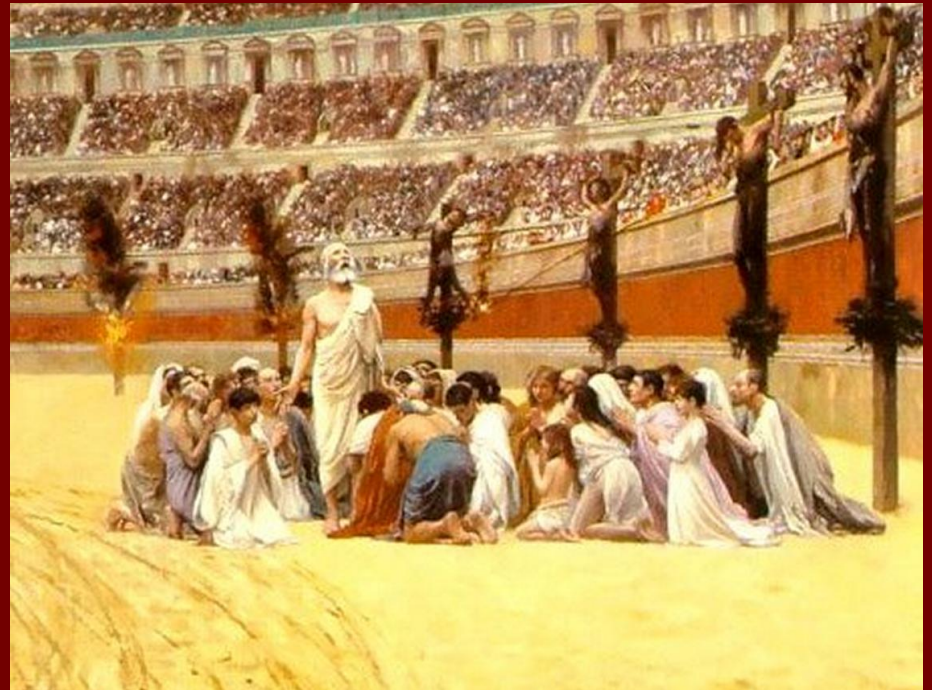
# What is a Sacrifice?

- **Definition of Sacrifice: “Anything Consecrated and Offered to God”**
- ❖ **As believers, how do we consecrate and offer ourselves to God as a living sacrifice?**



# Context of a Living Sacrifice In Rome

- **Being a Christian in the Rome Empire was far more hazardous to your physical life.**
- ❖ **Not utilizing knowledge correctly, laughing at demise could cause issues like the legend of Christians sacrifice by Emperor Nero**



# What Is A Practical Living Sacrifice?

## ■ I John 2:15-17

### ❖ The Lust of the Flesh

❖ Includes everything that appeals to our appetites and involves excessive desire.

✓ Food, Drink, Sex and anything else that satisfies physical needs.

### ❖ The Lust of the Eyes

❖ Includes materialism, coveting whatever we see that we don't have and envying those who have what we want.

# What Is A Practical Living Sacrifice?

## ■ I John 2:15-17

### ❖ The Pride of Life

❖ Any ambition for that which puffs us up and puts on the throne of our own lives.



# How Can A Believer Not Be Conformed To The World?

- **Romans 10:17**

- **Hear.**

- **Revelation 1:3**

- **Read.**

- **Acts 17:11**

- **Study.**

- **Psalms 119:9-11**

- **Memorize.**

- **Psalms 1:2-3**

- **Meditate.**



# Parables: Counting The Cost

## ■ Luke 14:25-33

Two parables and an exhortation to forsake all that we have as a mandatory condition to becoming Christ's disciples.





# Parables: Counting The Cost

## ■ **Luke 14:25-33 / Matthew 7:21-23**

- **Love all relationships less than love for Christ.**
- **Calculate the cost ; Jesus did not want a blind, naïve commitment that expected only blessings.**
- **Give up all you possess; complete surrender to Jesus Christ**

# Parables: Counting The Cost

## ■ Luke 9:23-27

- Deny self and take up cross daily.
- Complete dedication and willing obedience.
- Transfiguration at the Feast of Trumpets.



# Paul's Metaphors For Self-Discipline

## ■ I Corinthians 9:26-27

- ❖ **Subjection to Jesus Christ ... so that after I have preached to others, I myself will not be disqualified.**



# Sea Urchin's Self-Sharpening Teeth Metaphor

## Count The Cost

