

# Message



**Lamp Of The Body**

***Neal Parker***

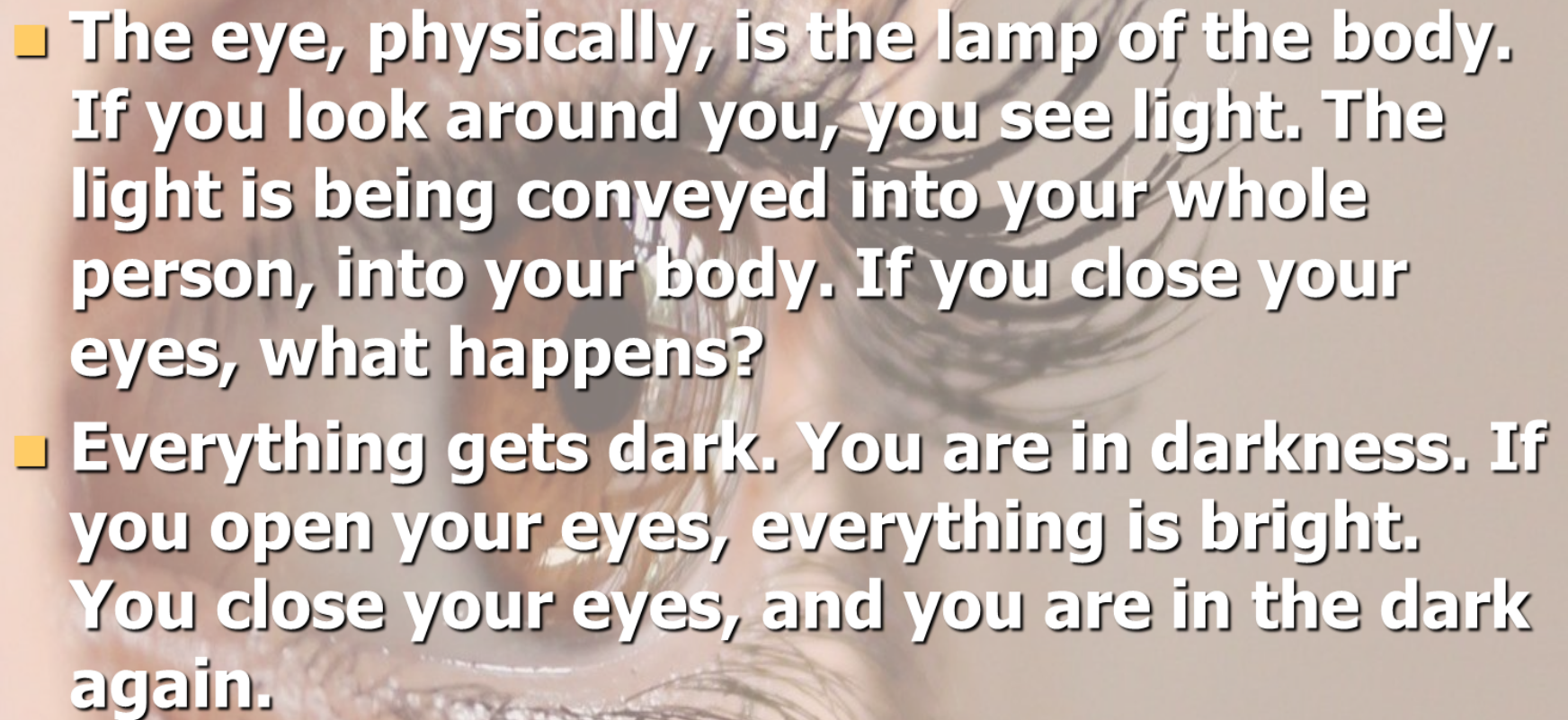
# Lamp Of The Body Is The Eye

## ■ Matthew 6:22-23 / Luke 11:33-36

- If your eye is good, if your eye can see well, then your body is going to be full of light.
- But if your eye is bad, if it is sick, then your whole body will be full of darkness.



# Center of Perception

- 
- A close-up photograph of a human eye, showing the iris, pupil, and eyelashes. The eye is looking slightly to the right. The image is overlaid with a semi-transparent grey box containing text.
- **The eye, physically, is the lamp of the body. If you look around you, you see light. The light is being conveyed into your whole person, into your body. If you close your eyes, what happens?**
  - **Everything gets dark. You are in darkness. If you open your eyes, everything is bright. You close your eyes, and you are in the dark again.**

# Spiritual Perception

- **Capacity to See and to Understand Spiritual Things**
- **'Do you see what I mean?'**
  - **'Does your mind, the eye of your mind, perceive what I said?'**
  - **You see with your intellect.**
  - **Your mind is now serving as your eye. Now, with spiritual eyes, you can see spiritual truths.**



# Spiritual Perception

- **The eyes of your spiritual understanding being opened**
  - **Acts 26:17-18**
    - **I now send you, to open their eyes, in order to turn them from darkness to light**
  - **Luke 4:16-20**
    - **He has sent me to proclaim release to the captives, and recovery of sight to the blind**
  - **II Corinthians 4:1-5**
    - **The god of this world has blinded the minds of the unbelieving.**

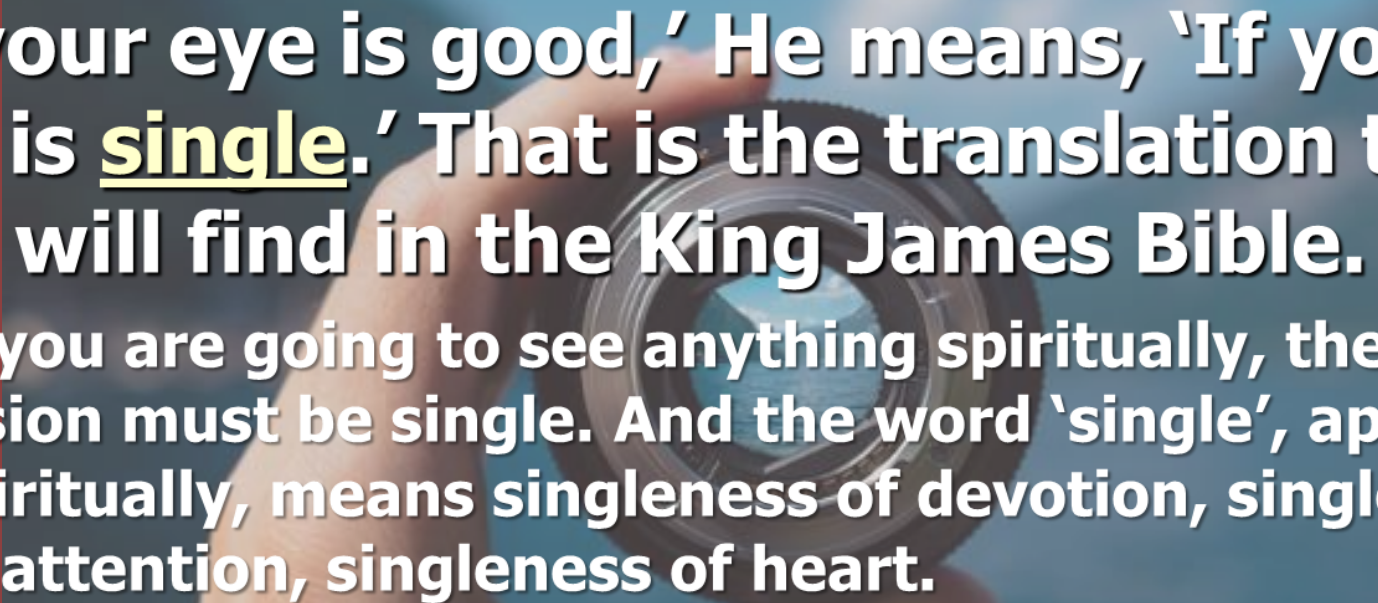


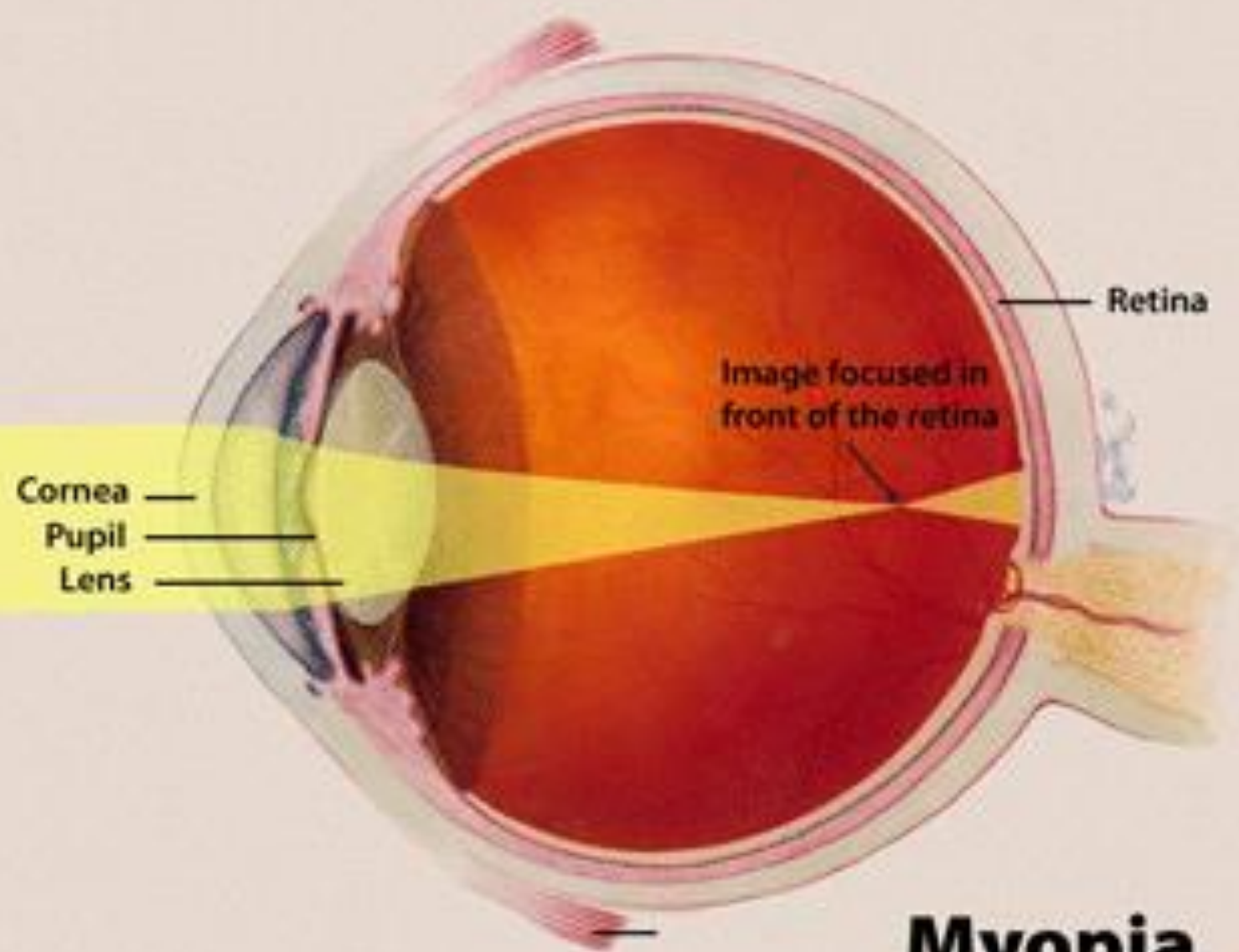
# Spiritual Perception

- **The eyes of your spiritual understanding being opened**
  - **Ephesians 1:18-19**
    - I pray that the eyes of your understanding may be enlightened.
  - **Proverbs 20:27**
    - The spirit of a man is the lamp of the Lord, searching all the inner depths of his heart.



# Clear Vision

- 
- A hand holding a camera lens against a blue sky background. The lens is held in the foreground, and the background is a blurred blue sky with some clouds. The hand is positioned in the lower-left quadrant of the image, holding the lens towards the center.
- **'If your eye is good,'** He means, **'If your eye is single.'** That is the translation that you will find in the King James Bible.
    - If you are going to see anything spiritually, then your vision must be single. And the word 'single', applied spiritually, means singleness of devotion, singleness of attention, singleness of heart.



**Myopia**  
(nearsightedness)



# Clear Vision

- **The heart is sometimes equivalent to the eye in the Scriptures. To 'set the heart' and to 'fix the eye' on something are parallel expressions**

- **Psalm 119:10-15**

- **I will meditate on your precepts, and fix my eyes on your ways.**



# Clear Vision

■ **The opposite of single vision is of course double vision.**

- **The problem of double vision occurs when our two eyes do not look in the same direction.**
- **One eye is looking at an object and the other eye is looking at something else.**
- **The result is that you see a single object as two objects.**

# Clear Vision

- **The heart is sometimes equivalent to the eye in the Scriptures. To 'set the heart' and to 'fix the eye' on something are parallel expressions**

– **Mark 8:22-26 /  
Matthew 14:22-32**

- **I will meditate on your precepts, and fix my eyes on your ways.**



# Application to Our Life

- **When your eye is wholly fixed upon God, no part of you is darkness.**
- **Spiritual vision then comes when you turn your eyes away from the world, away from self, away from materialism, and turn your eyes wholly upon God.**

