

A close-up photograph of a wheat field. The wheat stalks are golden-brown and have long, thin awns. The background is a clear, bright blue sky. The text is overlaid on the image.

THE PARABLE

OF THE WHEAT AND TARES

What Is A Parable?

- **Matthew 13:34-35 (Psalm 78:2)**
 - **Parable / Greek “Parabole” / Strong’s #3850**
 - **“Casting or placing side by side”**
 - **“To compare likeness or similitude”**



What Is A Parable?

- A Parable is **not** a straightforward description of an event, just as it occurred or will occur.
- A Parable is intended to be **similar** to a real event or a comparison that has to be **interpreted** to reveal the true meaning .

Power of Parables

- **Parables are a crucial component to spiritual understanding**
- **Create Relevance**
- **Provide Details**
- **Give Mental Images**
- **Motivate Action**



Overview: Parable Of The Sower

- **When the gospel of the coming Kingdom of God is witnessed, the ears that hear it are not always receptive to it.**
- **Natural conditions regarding seeds and soils are comparisons to human conditions interacting with God's Word, which have been chosen by the Word of God.**

Overview: Parable of the Wheat and Tares

- In this parable, there are two sowers, two kinds of seed and two harvests; one good and one bad.
- In this parable, the field which Jesus says, represents the world, contains all of the soils, from the previous parable, dispersed over its entirety.

Overview: Parable of the Wheat and Tares

- **Matthew 13:24-30, 36-43**
 - **Explanation of parable given By Jesus**
 - **Sower of the good seed = Jesus Christ**
 - **Field = the world**
 - **Good Seed = Sons of the kingdom**
 - **Tares = Sons of the evil one**
 - **Enemy = Satan**
 - **Harvest = End of the age**
 - **Reapers = God's angels**

What Could the Two Sowers Represent?

- **Matthew 13:37, 39**
 - The “Owner” of the field is Son of Man / Jesus
 - The “Enemy” is the “*diabolos*”: the devil, false accuser, slanderer.



Sowing While Servants Are Asleep

■ Consequences of Spiritual Sleep

– Matthew 13:25

– “But while his men were sleeping, his enemy came and sowed tares among the wheat and went away...”



Are the Tares Easily Distinguishable From The Wheat?

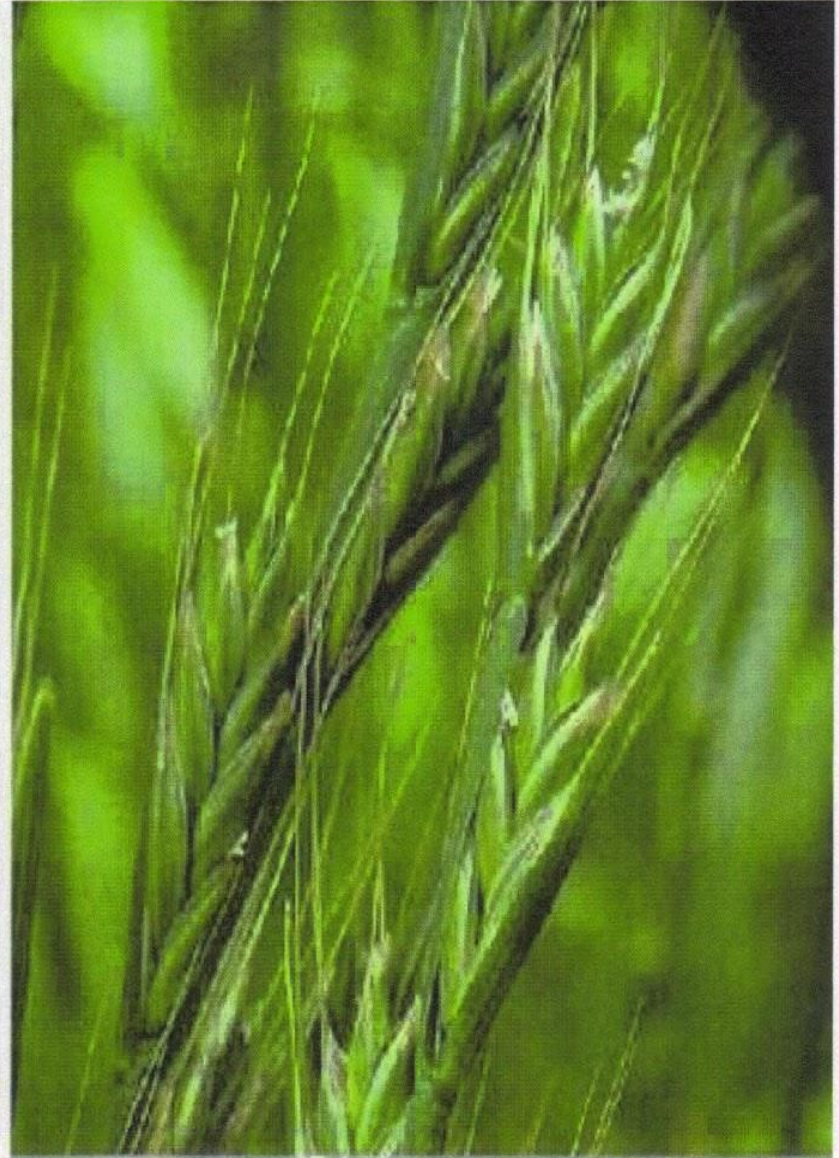
■ Matthew 13:28-30

- Tares are probably Darnel, which looks like wheat, while it is young, but can later be distinguished
- To try to destroy the darnel would mean destroying much of the wheat, and separating one from the other would be beyond the servants' abilities. Only when the wheat has matured can the tares be detected. Then the tares are gathered together in bundles in the field and destroyed by fire.

TARES Look IDENTICAL To WHEAT



WHEAT: before it is fully ripe.



TARES: *Lolium Temulentum*

Are the Tares Easily Distinguishable From The Wheat?

■ Physical Darnel - Tares

❖ Means: “drunkenness” / intoxicating effect when consumed

■ Spiritual Darnel

- ✓ Inability to walk
- ✓ Hindering speech
- ✓ Vomiting



Wheat... bowed over



Tares... stand tall



Wheat as it matures will bow its head, but tares will not. They look alike and the only way to tell the difference is to wait until they are mature.



How Could This Parable Relate To The Church

■ II Timothy 2:19-21

- “...gold and silver vessels, but also vessels of wood and of earthenware, some to honor and some to dishonor. Therefore, if anyone cleanses himself from these things, he will be a vessel for honor...”
- Spiritual wheat and tares could grow alike within God’s church, identical in appearance, and to attempt to uproot the tares could result in uprooting some the wheat, as well.

How Could This Parable Relate To The Church

■ Matthew 7:15-20

- Just as the qualitative difference between the mature fruit of the wheat and tares / darnel is different, only by the fruit may the brethren be known.

■ John 5:22-23 / Matthew 13:30

- “For not even the Father judges anyone, but He has given all judgement to the Son, so that all will honor the Son even as they honor the Father.”



Life Application: **Parables of the Wheat and Tares**

- **First, we need to be aware that tares—false members—are a reality. Counterfeit members do exist and are at work within God's church; Christ Himself says so. The fact that they are present requires that we be on our guard, not allowing ourselves to be led astray.**
- **Romans 8:29 / II Corinthians 10:12**
 - **Do we measure our actions by the actions of others? Jesus Christ is the one and only perfect model.**

Life Application: **Parables of the Wheat and Tares**

- **Second, Christ's parable warns us not only to take great care to avoid the false instruction and attitudes of the tares, but also to be mindful about how we treat young, immature "wheat" that we may mistake for tares. We must be slow to judge, remembering that church members are not all equally converted. Though they may be pure in heart, even the wheat may not always act properly. Likewise, some brethren may always act properly, may always seem to do the right thing, but their hearts remain unconverted or even corrupted.**

Life Application: Parables of the Wheat and Tares

■ II Timothy 2:19/ James 5:7-9

- “...The Lord knows those who are His...”
- “...Behold, the Judge is standing at the door!”



Life Application: **Parables of the Wheat and Tares**

- **As maturing Christians, we are to develop righteous judgement. We are training to be priests and kings in the coming Kingdom of God. We must evaluate and recognize sin, in order to avoid it.**
- **We must actively judge our own lives, recognizing sin within ourselves.**
- **Jesus Christ has not given us the responsibility of removing the tares. He has reserved that job solely for Himself.**
- **As wheat, our responsibility is to grow mature good fruit; Doing Justly, Loving Mercy and Walking Humbly!**

GROUP DISCUSSION

